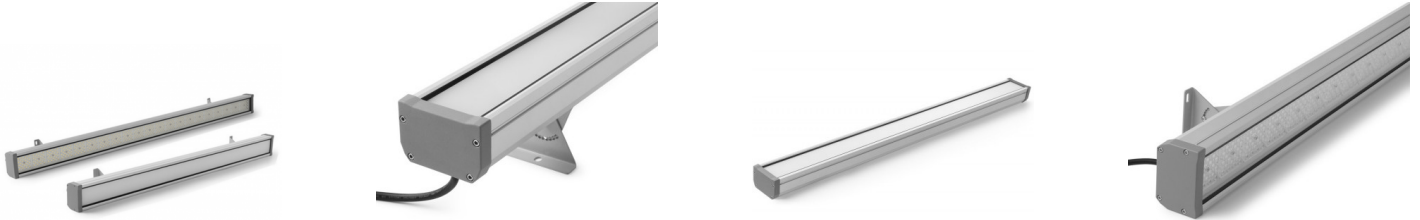


TRI-PROOF TA66



A professional solution for the lighting of warehouses and production facilities. The lamps are resistant to dust, moisture, water (IP66 class), corrosion, shocks (IK08 class). Light flux up to 160 Lm/W is available. Different choice of light scattering angles.



Light characteristics

Lighting Effectiveness	160 lm/W
Beam Angle	30°; 60°; 90°; 120°
Temperature (CCT)	3000K-6500K
Color Rendering Index (CRI)	Ra≥80
LED chip type	SMD2835

Electrical data

Voltage	AC 200-240V
Power Factor (PF)	>0.95
Harmonic Distortion	<10(THD)
Power supply brand	BOKE
Electrical Safety Class	I

Common parameters

IP Rating	IP66
IK rating	IK08
Housing	Aluminium; Tempered Glass
Warranty	5 years
Certificates	CE; ROHS

Operating conditions

Life time (LM80)	50000h
Light Output Decay	0.2
Ambient Temperature	-45°C to +50°C
Permissible ambient humidity	98%
Dimmable	0-10V; DALI

Model parameters

Model	Power	Light flux	Size (mm)
TP-0320N96-H	20W	3200 lm	300x85x58
TP-0630N96-H	30W	4800 lm	600x85x58
TP-1240N96-H	40W	6400 lm	1200x85x58
TP-1260N96-H	60W	9600 lm	1200x85x58
TP-1580N96-H	80W	12800 lm	1500x85x58